



Sherrill Faw Realty, LLC

307 10th Street, North Wilkesboro, NC 28659

A Christian Office Office: 336-903-0060



HUD Broker

Sherrill Faw
Broker-in-charge
336-957-7600



Joe McMillan
Broker
336-984-5549



Marty Johnson
Provisional Broker
336-469-4392



Yvonne Pardue
Broker
336-262-6410



Bonnie Alday
Office Manager



Darla Terrell
Marketing Manager

MLS 1128962 \$399,000



1400 D Street N Wilkesboro
For sale or lease at the busy corner of D Street and Boone Trail. It has 2 new gas pumps and 3 tanks.
NEW COMMERCIAL LISTING

MLS 1071205 \$49,900



TBD Highland North Rd
6.59 acres of land to build your dream home. Only 12 miles to the Blue Ridge Parkway.
REDUCED

MLS 1051403 \$30,000



Lot 4 Browntown Rd
Cleared level lot in private peaceful setting. 3.4 acres of land. Some restrictions apply but double wides are allowed.

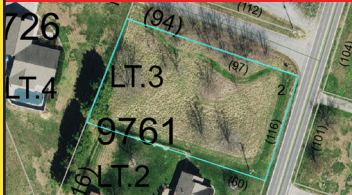
REDUCED!
MOUNTAIN VIEW ESTATES

Lot A .50 ac \$8,600

Lot 1 .72 ac \$9,000

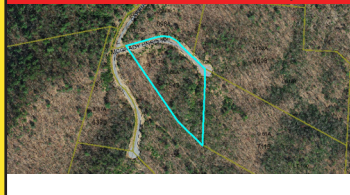
Lot 13 .35 ac \$6,700

MLS 936406 \$15,000



Lot 3 Clingman Meadows
This 0.53 acre lot that is level & cleared is perfect for your new home! Property is on a state-maintained road.

MLS 1086861 \$29,900



Lot 159 Carriage House Trail
3.86 acres located in Chestnut Mountain Farms an equestrian community with riding trails, barn, paved roads.

MLS 1115444 \$42,450



Ashe View Drive, Millers Creek
Build your mountain home on this mostly flat 1.31 acre lot in the Bull Mountain community.
GREAT LOT

MLS 1126899 \$29,900



Ashe View Drive lot 23 Bull Mtn.
Build your mountain dream home on this 1.19 acre lot. Bull Mountain is a gated community with paved roads and long range views.

MLS 1093124 \$32,000



Hawkins Grove Rd
6.90 unrestricted acres in a private location minutes away from the Thurmond Chatham Game Lands & N. Wilkesboro
REDUCED

MLS 960168 \$21,900



Lot 110 Rock Wall Road
3.01 acres in Sutter's Ridge a beautiful residential restricted neighborhood with a private setting.
OWNER FINANCING AVAILABLE

MLS 1055259 \$24,900



16 Doe Mtn
1.80 acres in gated community minutes from the Blue Ridge Parkway with great views.
OWNER FINANCING AVAILABLE

MLS 1015051 \$19,900



LOT 43 Bull Mtn
1.21 acres in a gated community with long range views.
OWNER FINANCING AVAILABLE

sherrillfaw@sherrillfaw.com

joemcmillan@sherrillfaw.com

yvonnehpardue@gmail.com

martyjohnson@sherrillfaw.com



1 Corinthians 13:8

Love NEVER FAILS



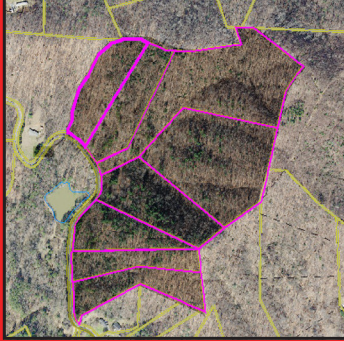
APPROVED FOR DOUBLE-WIDE MOBILE HOMES



2 Lots on Smith Ridgecrest Rd
Great location for double wide mobile homes or starter home (no single wides). Public water available. Close to Roaring River and Yadkin River for great fishing. Only 5 miles from N Wilkesboro & 9 miles to Elkin.

Lot 5 - 0.40 acre \$11,900
Lot 12 - 0.65 acre \$9,999

GREAT FOR TINY HOMES OR THE HOME OF YOUR DREAMS

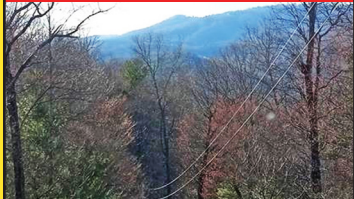


Myers Estates

The perfect location for your new home in a peaceful country setting with wooded lots. Approved for homes starting at 600 sq. ft. Some restrictions apply and mobile homes are not permitted. 6 lots have road frontage and the other 2 have a shared easement from Arley Myers Store Road.

Call for more information

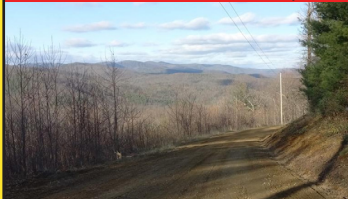
MLS 1099322 \$109,900



Mountain Vista Dr, McGrady
21.09 acres of beautiful mountain land, some restrictions apply.

MOUNTAIN VIEWS

MLS 1099340 \$18,900



Mountain Vista Dr, McGrady
1.93 acres with beautiful long range mountain views. The perfect lot for your mountain home.

MOUNTAIN VIEWS

MLS 1098804 \$14,155



.39 ac Holly Brook Street
Great lot to build your own mountain retreat. Owner financing available.

MLS 1098818 \$14,155



.39 ac Holly Brook Street
This is a nice lot in a good neighborhood to build your dream home on.

MLS 1098603 \$18,905



1.25 ac Holly Brook Street
Nice partially wooded lot with end of the road privacy in Holly Hills subdivision.

MLS 1091925 \$29,900



Lots 230 & 231 Lakeside Drive
15.47 acres in the equestrian community of Chestnut Mountain Farms.

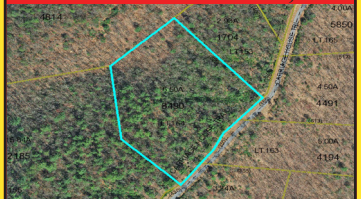
GREAT PRICE!

MLS 967252 \$12,900



Payne Avenue, Wilkesboro
Nice restricted residential 1.08 acre lot in Berry Mountain Estates. Property is very close to W Kerr Scott Lake.

MLS 1093231 \$29,900



Lot 154 Carriage House Trail
6.50 acres in Chestnut Mountain Farms equestrian community with riding trails, barn & paved roads.

OWNER FINANCING AVAILABLE

MLS 1026904 \$95,000



Off Jolly St, N Wilkesboro
12.57 acres in a great location to build your manufacturing or any business that creates industrial products.

COMMERCIAL LEASE



201 Highway 268 N Wilkesboro
7,000 sf heated & cooled. 2,500 sqft office space, 4,500 sqft of open landscape and on-site parking. **\$2,000 per month**

***1 MONTH FREE**



101 Main St Wilkesboro
1 office on top floor with community breakroom, lobby, restrooms, utilities, and internet. *1 month free with 1 year lease. **\$400 per month**

MLS 1116881 \$599,000



1303 Curtis Bridge Rd
Building on .636 acres has high visibility from US Hwy 421 with drive-thru and 42 parking spaces.

GREAT LOCATION

Go to our website www.sherrillfaw.com and click on "menu" to see listings.