



Sherrill Faw Realty, LLC

307 10th Street, North Wilkesboro, NC 28659

A Christian Office Office: 336-903-0060



HUD Broker

Sherrill Faw
Broker-in-charge
336-957-7600



Joe McMillan
Broker
336-984-5549



Marty Johnson
Provisional Broker
336-469-4392



Yvonne Pardue
Broker
336-262-6410



Bonnie Alday
Office Manager



Darla Terrell
Marketing Manager

MLS 1128726

NEW LISTING

\$239,000



639 Gilliam Road N Wilkesboro
Nice Brick ranch with beautiful exposed beams, 3 BR, 2 BA, finished basement and a double carport on 1.45 acres.



INVESTMENT PROPERTY FOR SALE



305 10th St, North Wilkesboro, NC

This 40,000 square foot building is situated on a busy downtown corner ensuring a regular flow of vehicular and pedestrian traffic. It has 4 stories, each are 10,000 sq. ft. and is 75% occupied with tenants. The top floor could be repurposed for apartments. **MLS# 1125278 \$1,100,000**

MLS 1131980

\$179,900

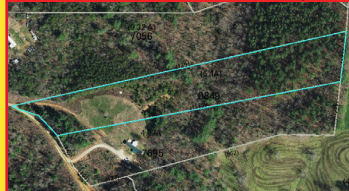


2124 Congo Road Wilkesboro
Like new double-wide home with a great floor plan on a semi-private .57 ac lot.

NEW LISTING

MLS 1131600

\$28,900



River Bend Lane, Hays
5.067+/- acres close to Stone Mountain and mobile homes are allowed.

REDUCED

MLS 1131616

\$21,600

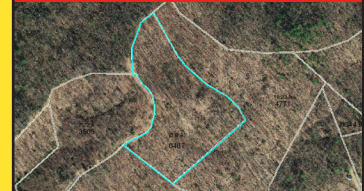


River Bend Lane, Hays
Mobile homes are allowed on this 5 +/- acres close to Stone Mountain.

REDUCED

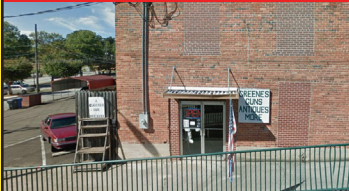
MLS 1093124

\$32,000



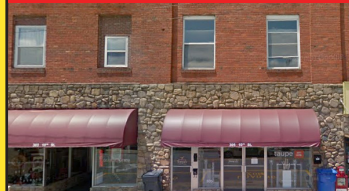
Hawkins Grove Rd
6.90 unrestricted acres in a private location minutes away from the Thurmond Chatham Game Lands & N. Wilkesboro **REDUCED**

COMMERCIAL LEASE



215 10th St, N Wilkesboro
2,000 sq ft with restroom, 3 tub commercial sink, entrance on c street, public & private parking. **Available now! \$700 per month**

COMMERCIAL LEASE



305 10th Street N Wilkesboro
3rd floor space with 5000 square ft, heat & air, restroom, public & private parking. **Available 4/1 \$1,000 per month**

MLS 1128962

\$399,000



1400 D Street N Wilkesboro
For sale or lease at the busy corner of D Street and Boone Trail. It has 2 new gas pumps and 3 tanks. **COMMERCIAL LISTING**

REDUCED!
MOUNTAIN VIEW ESTATES

Lot A .50 ac \$8,600

Lot 1 .72 ac \$9,000

Lot 13 .35 ac \$6,700

sherrillfaw@sherrillfaw.com

joemcmillan@sherrillfaw.com

yvonnehpardue@gmail.com

martyjohnson@sherrillfaw.com



MLS 1115444 \$42,450



Ashe View Drive, Millers Creek
Build your mountain home on this mostly flat 1.31 acre lot in the Bull Mountain community.
GREAT LOT

MLS 1071205 \$49,900



TBD Highland North Rd
6.59 acres of land to build your dream home. Only 12 miles to the Blue Ridge Parkway.
REDUCED

MLS 1099322 \$109,900



Mountain Vista Dr, McGrady
21.09 acres of beautiful mountain land, some restrictions apply.
MOUNTAIN VIEWS

MLS 1099340 \$18,900



Mountain Vista Dr, McGrady
1.93 acres with beautiful long range mountain views. The perfect lot for your mountain home.
MOUNTAIN VIEWS

MLS 1026904 \$95,000



Off Jolly St, N Wilkesboro
12.57 acres in a great location to build your manufacturing or any business that creates industrial products.

MLS 1098603 \$18,905



1.25 ac Holly Brook Street
Nice partially wooded lot with end of the road privacy in Holly Hills subdivision.

MLS 936406 \$15,000



Lot 3 Clingman Meadows
0.53 acre level cleared lot to build your next home. 15 minutes to North Wilkesboro or Elkin.

MLS 1091925 \$29,900



Lots 230 & 231 Lakeside Drive
15.47 acres in the equestrian community of Chestnut Mountain Farms.
GREAT PRICE!

Myers Estate is Now Open
to tiny homes
from 600 square feet & some restrictions apply

AVAILABLE LOTS:

- Lot 1 - 3.80 acres \$36,500
- Lot 2 - 4.43 acres \$42,500
- Lot 3 - 11.41 acres \$79,500
- Lot 4 - 10.261 acres \$75,900
- Lot 5 - 5.67 acres \$49,500
- Lot 6 - 3.72 acres \$39,900
- Lot 7 - 3.13 acres \$30,900
- Lot 8 - 3.36 acres \$34,500

APPROVED FOR DOUBLE-WIDE MOBILE HOMES



2 Lots on Smith Ridgecrest Rd
Great location for double wide mobile homes or starter home (no single wides). Public water available. Close to Roaring River and Yadkin River for great fishing. Only 5 miles from N Wilkesboro & 9 miles to Elkin.

Lot 5 - 0.40 acre \$11,900
Lot 12 - 0.65 acre \$9,999

MLS 1055259 \$24,900



16 Doe Mtn
1.80 acres in gated community minutes from the Blue Ridge Parkway with great views.
OWNER FINANCING AVAILABLE

MLS 960168 \$21,900



Lot 110 Rock Wall Road
3.01 acres in Sutter's Ridge a beautiful residential restricted neighborhood with a private setting.
OWNER FINANCING AVAILABLE

MLS 1015051 \$19,900



LOT 43 Bull Mtn
1.21 acres in a gated community with long range views.
OWNER FINANCING AVAILABLE

MLS 1093231 \$29,900



Lot 154 Carriage House Trail
6.50 acres in Chestnut Mountain Farms equestrian community with riding trails, barn & paved roads.
OWNER FINANCING AVAILABLE