

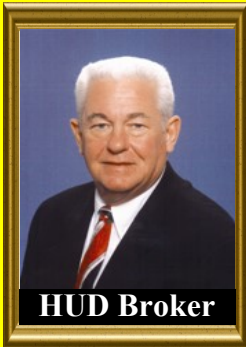
Sherrill Faw Realty, LLC



307 10th Street, North Wilkesboro, NC 28659

A Christian Office

Office: 336-903-0060



HUD Broker

Sherrill Faw
Broker-in-charge
336-957-7600



Joe McMillan
Broker
336-984-5549



Jane Pierce
Office Manager



Emaeth Myers
Media Manager



CALL JOE MCMILLAN AT 336-984-5549

TBD Bill Horton Rd
71+/- acres of unrestricted
land located in the Ferguson
community.
MLS 1058877 \$276,900



1632 Byrd Ridge Rd
2 bedroom mobile home on
10.37 acres with Reddies
river frontage, lots of deer.
MLS 1057830 \$99,900



Lt 12 Smith Ridgecrest Rd
Owner financing available
with 20% down. 0.65 acre
lot great for double wide.
MLS 956492 \$9,999



Lot 4 Browntown Rd
Cleared level lot in private
peaceful setting. 3.4 acres
of land.
MLS 1051403 \$54,900



TBD River Bend Ln
4.32 acres of land close to
Stone Mtn State Park.
Mobile homes allowed.
MLS 1021689 \$21,600

GATED COMMUNITY



Lot 28 Sutter's Ridge
3.34 acres of great land in a
residential restricted neigh-
borhood private setting
MLS 1044308 \$24,900

GATED COMMUNITY



38 Bull Mtn
3.07 acres of land with
plenty of road frontage and
long range views.
MLS 983862 \$19,900

GATED COMMUNITY

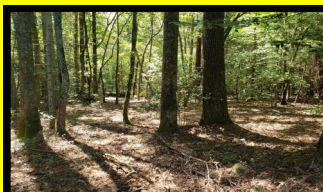


Lot 110 Sutter's Ridge
3.01 acres building lot for
your mountain home, good
views. Owner financing.
MLS 960168 \$21,900

GATED COMMUNITY



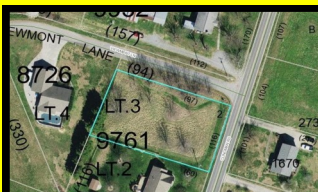
65 Doe Mtn
3.90 acres of land minutes
from the Blue Ridge
Parkway with great views.
MLS 922722 \$19,900



Lot 21 Spring Dr
0.73 acre level lot located in
a great neighborhood down
highway 115.
MLS 1048470 \$12,900



Lot 2 Holder St
Nice building lot for
residential use with 0.49
acre in Mtn View Estates.
MLS 959994 \$9,499



Lot 3 Clingman Meadows
Level, cleared corner lot in
good neighborhood. 0.53
acre, near Clingman medical
MLS 936406 \$15,000



Off Jolly St
12.57 acres of great area to
build any type business
located behind save-a-lot.
MLS 1026904 \$99,000

Email: sherrillfaw@sherrillfaw.com

Website: www.sherrillfaw.com

Sherrill Faw Realty, LLC



307 10th Street, North Wilkesboro, NC 28659
A Christian Office

Office: 336-903-0060



Cure for Virus

Pray for everyone's safety and a worldwide revival of coming back to God.



395 Green Point Lane

Quite, furnished cabin located in Majestic Mountain gated community near the Blue Ridge Mountains. Large deck overlooks mountains perfect for relaxation. Custom spiral staircase, custom sliding door, kitchen pergola and ceramic wood stove. Gas stove works with propane hookup. 3.16 acres of land.

MLS: 1059139

Price: \$244,900



CALL JOE MCMILLAN AT 336-984-5549

TBD Bill Horton Rd

10+/- acres of unrestricted land located in the Ferguson community. Creek runs through property.

MLS 1058891 \$ 45,000



10, 000+/- sqft for lease in front of Muzz's Gym in North Wilkesboro
2, 000+/- sqft office space
10.5' ceiling heights

Large open space - New windows
Numerous uses possible including small textile operation
\$2, 500 per month plus electricity

**WE WILL SELL
YOUR PROPERTY
FOR LESS COST
TO YOU**



100 Finley Ave

14,000+ sqft of property zoned for Office & Institutional. Many possibilities such as bed & breakfast or a church. Great parking lot. Located on top of a hill close to Samaritans Purse. Corner lot with visibility from highway 18N, Finley Ave and Reynolds Rd

MLS: 1051766

Price: \$495,000

FOR SALE OR TRADE



Go to our website www.sherrillfaw.com and click on the "for sale" tabs on the left hand side to see listings.

Property Management

Sherrill Faw personally manages your property
We would like to ask for you to let us manage your property.

Email: sherrillfaw@sherrillfaw.com

Website: www.sherrillfaw.com