



Sherrill Faw Realty, LLC

307 10th Street, North Wilkesboro, NC 28659

A Christian Office Office: 336-903-0060



Sherrill Faw
Broker-in-charge
336-957-7600



Joe McMillan
Broker
336-984-5549



Yvonne Pardue
Broker
336-262-6410



Bonnie Alday
Rental Manager



Darla Terrell
Marketing Manager

Just updated



800 Rock Creek Church Rd
New granite countertops, appliances, vinyl plank flooring, carpet, paint and more. **MLS 1102567 \$199,900**
NEW LISTING

MLS 1095793 2 Homes Selling Together \$349,900



810 F Street & 602 9th Street
.39 acre corner lot with two homes being sold together. The F St home is 2984 sqft and the 9th St home is 1109 sqft. The contents of both homes conveys and is an antique lover's dream!

MLS 1099340 \$18,900



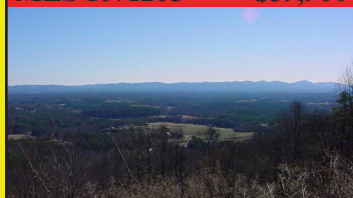
Mountain Vista Dr, McGrady
1.93 acres with beautiful long range mountain views. The perfect lot for your mountain home.
MOUNTAIN VIEWS

MLS 1099322 \$109,900



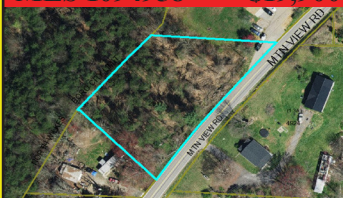
Mountain Vista Dr, McGrady
21.09 acres of beautiful mountain land, some restrictions apply.
MOUNTAIN VIEWS

MLS 1071205 \$59,900



TBD Highland North Rd
6.59 acres of land to build your dream home. Only 12 miles to the Blue Ridge Parkway.

MLS 1094958 \$19,900



TBD Mountain View Road
0.80 acre wooded lot with no restrictions in good area. Convenient to grocery and general store, drug stores and restaurants.

MLS 1093124 \$32,000



Hawkins Grove Rd 6.90
Private location minutes away from the Thurmond Chatham Game Lands and 20 minutes from N Wilkesboro. **REDUCED**

MLS 1068503 REDUCED \$274,900



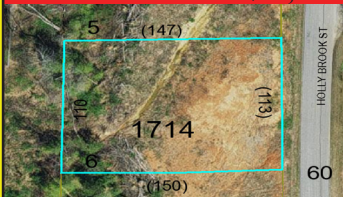
Great 80+ Acres
Leatherwood Mountains Resort located in the Blue Ridge Mountains is a gated luxury residential community.

MLS 1098603 \$19,900



1.25 ac Holly Brook Street
Nice partially wooded lot with end of the road privacy in Holly Hills subdivision.

MLS 1098804 \$14,900



.39 ac Holly Brook Street
Great lot to build your own mountain retreat. Owner financing available.

MLS 1098818 \$14,900



.39 ac Holly Brook Street
This is a nice lot in a good neighborhood to build your dream home on.



*The righteous man walks in his integrity;
His children are blessed after him.*
- Proverbs 20:7



Myers Estate is Now Open

to tiny homes

from 600 square feet & some restrictions apply



AVAILABLE LOTS:

AVAILABLE LOTS:

- Lot 1 - 3.80 acres \$36,500
- Lot 2 - 4.43 acres \$42,500
- Lot 3 - 11.41 acres \$79,500
- Lot 4 - 10.261 acres \$75,900
- Lot 5 - 5.67 acres \$49,500
- Lot 6 - 3.72 acres \$39,900
- Lot 7 - 3.13 acres \$30,900
- Lot 8 - 3.36 acres \$34,500

MLS 1048470 \$12,900



Lot 21 Spring Dr
0.73 acre good laying lot located in a great neighborhood to build your dream home on.

MLS 956482 \$11,900



Lot 5 Smith Ridgecrest Rd
0.40 acre lot. Great location for double wide mobile home or starter home.
OWNER FINANCING AVAILABLE

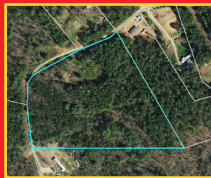
**ONLY 3 LOTS AVAILABLE
RIVER BEND ESTATES**



Lot A .50 acres \$8,650



Lot I .72 acres \$9,000



Lot 13 .35 acres \$6,750

River Bend Estates is close to Basin Creek and Stone Mountain & only 8 miles to the Blue Ridge Parkway. Would be a great place to hunt.

**ALL LOTS ARE REDUCED
MOUNTAIN VIEW ESTATES**



Lot A .50 acres \$8,650



Lot I .72 acres \$9,000



Lot 13 .35 acres \$6,750



Lot 14 .40 acres \$3,150

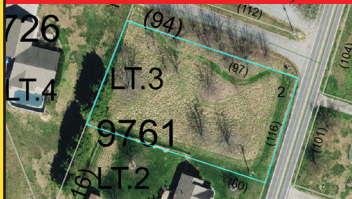


Lot 15 .44 acres \$3,240



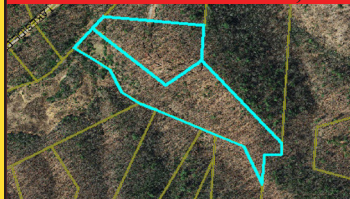
Lot 16 .44 acres \$3,240

MLS 936406 \$15,000



Lot 3 Clingman Meadows
0.53 acre level cleared lot to build your next home. 15 minutes to North Wilkesboro or Elkin.

MLS 1091925 \$47,900



Lots 230 & 231 Lakeside Drive
15.47 acres in Chestnut Mountain Farms, a high class equestrian community. Both lots are being sold together.

MLS 1093231 \$29,900



Lot 154 Carriage House Trail
6.50 acres in Chestnut Mountain Farms equestrian community with riding trails, barn & paved roads.
OWNER FINANCING AVAILABLE

COMMERCIAL PROPERTY



5968 N NC Highway 16
For sale or lease - last gas station on Hwy 16 before you reach the Blue Ridge Parkway. **MLS1062850**
\$249,000 or \$1300 per month.

COMMERCIAL RENTALS



101 Main St Wilkesboro
For lease - 5400 sqft building on the busiest corner in the heart of downtown Wilkesboro.
\$3200 per month



201 Highway 268 N Wilkesboro
7,000 sf heated & cooled. 2,500 sqft office space, 4,500 sqft of open landscape and on-site parking. **\$2,000 per month**



1516 -A Industrial Dr
4500 sqft warehouse space with garage door, 275 sqft of office space. **\$2,200 monthly**



419 -A Main Street N Wilkesboro
Street level space = 20 X 40 commercial rental space with restroom & off street parking.
\$750 per month