



Sherrill Faw Realty, LLC

307 10th Street, North Wilkesboro, NC 28659

A Christian Office Office: 336-903-0060



Sherrill Faw
Broker-in-charge
336-957-7600



Joe McMillan
Broker
336-984-5549



Yvonne Pardue
Broker
336-262-6410



Bonnie Alday
Rental Manager



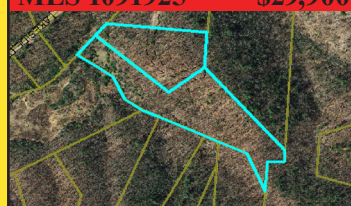
Darla Terrell
Marketing Manager

MLS 1086861 \$29,900



Lot 159 Carriage House Trail
3.86 acres located in Chestnut Mountain Farms an equestrian community with riding trails, barn, paved roads.

MLS 1091925 \$29,900



Lots 230 & 231 Lakeside Drive
15.47 acres in the equestrian community of Chestnut Mountain Farms.
GREAT PRICE!

MLS 956482 \$11,900



Lot 5 Smith Ridgecrest Rd
0.40 acre lot. Great location for double wide mobile home or starter home.
OWNER FINANCING AVAILABLE

MLS 1115444 \$42,450



Ashe View Drive, Millers Creek
Build your mountain home on this mostly flat 1.31 acre lot in the Bull Mountain community.
GREAT LOT

MLS 1071205 \$49,900



TBD Highland North Rd
6.59 acres of land to build your dream home. Only 12 miles to the Blue Ridge Parkway.
REDUCED

MLS 1093124 \$32,000



Hawkins Grove Rd
6.90 unrestricted acres in a private location minutes away from the Thurmond Chatham Game Lands & N. Wilkesboro

MLS 1109348 \$64,900



TBD Hawkins Grove Rd
11.2 secluded acres to build your dream home on. Peaceful property with beautiful mountain views.

MLS 1015051 \$19,900




LOT 43 Bull Mtn
1.21 acres in a gated community with long range views.
OWNER FINANCING AVAILABLE

MLS 960168 \$21,900



Lot 110 Rock Wall Road
3.01 acres in Sutter's Ridge a beautiful residential restricted neighborhood with a private setting.
OWNER FINANCING AVAILABLE

MLS 1093231 \$29,900



Lot 154 Carriage House Trail
6.50 acres in Chestnut Mountain Farms equestrian community with riding trails, barn & paved roads.
OWNER FINANCING AVAILABLE

Let's make big moves together.
It's a great time to sell!

You may be pleasantly surprised by the current market value of your home. Are you dreaming of buying a home? You may qualify with no money down.

I'll assist you every step of the way.
Please contact me at 336-262-6410 or
yvonnehpardue@gmail.com



Yvonne Pardue



John 15:15



READY TO BUY YOUR NEW HOME?



START WITH A LENDER

They will show you loan options, some of which are little to no money down. A lender will also pre-qualify you so that when you find your dream home, you'll be ready to make an offer!

Call me and I'll put you in contact with a local lender.

Sherrill Faw 336-903-0060

GREAT FOR TINY HOMES OR THE HOME OF YOUR DREAMS

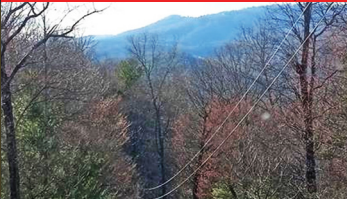


Myers Estates

The perfect location for your new home in a peaceful country setting with wooded lots. Approved for homes starting at 600 sq. ft. Some restrictions apply and mobile homes are not permitted. 6 lots have road frontage and the other 2 have a shared easement from Arley Myers Store Road.

Call for more information

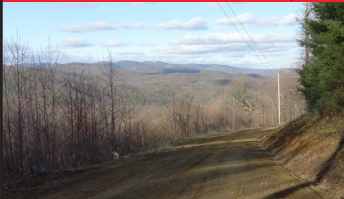
MLS 1099322 \$109,900



Mountain Vista Dr, McGrady
21.09 acres of beautiful mountain land, some restrictions apply.

MOUNTAIN VIEWS

MLS 1099340 \$18,900



Mountain Vista Dr, McGrady
1.93 acres with beautiful long range mountain views. The perfect lot for your mountain home.

MOUNTAIN VIEWS

MLS 1098603 \$19,900



1.25 ac Holly Brook Street
Nice partially wooded lot with end of the road privacy in Holly Hills subdivision.

MLS 1098818 \$14,900



.39 ac Holly Brook Street
This is a nice lot in a good neighborhood to build your dream home on.

MLS 967252 \$12,900



Little Berry Lane, Wilkesboro
Nice restricted residential 1.08 acre lot in Berry Mountain Estates.

REDUCED

COMMERCIAL LEASE



419-A Main Street N Wilkesboro
Street level space is 20 X 40 commercial rental space with restroom & off street parking.
\$650 per month

COMMERCIAL LEASE



201 Highway 268 N Wilkesboro
7,000 sf heated & cooled. 2,500 sqft office space, 4,500 sqft of open landscape and on-site parking. **\$2,000 per month**

*1 MONTH FREE



101 Main St Wilkesboro
2 offices on top floor with community breakroom, lobby, restrooms, utilities, and internet. *1 month free with 1 year lease. **\$400 per month**

MLS 1116881 \$599,000



1303 Curtis Bridge Rd
Building on .636 acres has high visibility from US Hwy 421 with drive-thru and 42 parking spaces.

GREAT LOCATION

MLS 951779 \$599,000



3016 US Highway 21
Prime highway location for fast food, gas, retail, etc. Traffic count is 20,000 vehicles per day.

COMMERCIAL PROPERTY

MLS 951585 \$499,000



401 2nd St North Wilkesboro
Prime location for fast food, gas, retail, etc. Access to existing traffic signal.

COMMERCIAL PROPERTY

MLS 951615 \$149,000



311 2nd St North Wilkesboro
High traffic count, great visibility and access to existing traffic signal with 100' road frontage.

COMMERCIAL PROPERTY

see all Wilkes County listings at sherrillfaw.com