



# Sherrill Faw Realty, LLC

307 10th Street, North Wilkesboro, NC 28659

*A Christian Office* Office: 336-903-0060



**Sherrill Faw**  
Broker-in-charge  
336-957-7600



**Joe McMillan**  
Broker  
336-984-5549



**Yvonne Pardue**  
Broker  
336-262-6410



**Bonnie Alday**  
Rental Manager



**Darla Terrell**  
Marketing Manager

**MLS 1115444 \$42,450**



**Ashe View Drive, Millers Creek**  
Build your mountain home on this mostly flat 1.31 acre lot in the Bull Mountain community.

**NEW LISTING**

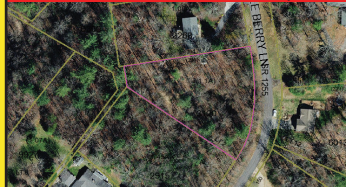
**MLS 1091925 \$29,900**



**Lots 230 & 231 Lakeside Drive**  
15.47 acres in the equestrian community of Chestnut Mountain Farms.

**GREAT NEW PRICE!**

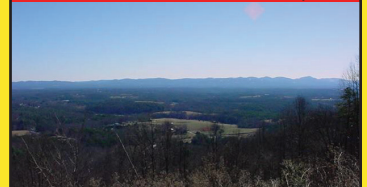
**MLS 967192 \$12,900**



**Little Berry Lane, Wilkesboro**  
Nice restricted residential 1.08 acre lot in Berry Mountain Estates.

**REDUCED**

**MLS 1071205 \$49,900**



**TBD Highland North Rd**  
6.59 acres of land to build your dream home. Only 12 miles to the Blue Ridge Parkway.

**REDUCED**

**MLS 936406 \$15,000**



**Lot 3 Clingman Meadows**  
This 0.53 acre lot that is level & cleared is perfect for your new home! Property is on a state-maintained road.

**MLS 1109348 \$64,900**



**TBD Hawkins Grove Rd**  
11.2 secluded acres to build your dream home on. Peaceful property with beautiful mountain views.

**MLS 960168 \$21,900**



**Lot 110 Rock Wall Road**  
3.01 acres in Sutter's Ridge a beautiful residential restricted neighborhood with a private setting.

**OWNER FINANCING AVAILABLE**

**MLS 1093231 \$29,900**



**Lot 154 Carriage House Trail**  
6.50 acres in Chestnut Mountain Farms equestrian community with riding trails, barn & paved roads.

**OWNER FINANCING AVAILABLE**

**MLS 1015051 \$19,900**



**LOT 43 Bull Mtn**  
1.21 acres in a gated community with long range views.

**OWNER FINANCING AVAILABLE**

**MLS 1055259 \$24,900**



**16 Doe Mtn**  
1.80 acres in gated community minutes from the Blue Ridge Parkway with great views.

**OWNER FINANCING AVAILABLE**

**APPROVED FOR DOUBLE-WIDE MOBILE HOMES**



**2 Lots on Smith Ridgecrest Rd**  
Great location for double wide mobile homes or starter home (no single wides). Public water available. Close to Roaring River and Yadkin River for great fishing. Only 5 miles from N Wilkesboro & 9 miles to Elkin.

**Lot 5 - 0.40 acre \$11,900**  
**Lot 12 - 0.65 acre \$9,999**





**Sherrill Faw**  
Broker



## Congratulations!

50 years of "making it happen"  
for Wilkes and the  
surrounding counties!



**FOR SALE**  
1303 Curtis Bridge Rd  
**Great commercial location!**  
0.636 Acres, on US Hwy 421 with high visibility. Former Long-John Silvers. Prime location for fast food, gas, retail, etc. Property has existing drive-thru and parking lot with 42 parking spaces. Traffic count of 30,000 vehicles per day.  
**Call for more information.**



**COMMERCIAL LEASE**



**101 Main St Wilkesboro**  
Top floor has 4 offices WITH Community breakroom, lobby, restrooms, utilities, and internet.  
**400 per month**

**COMMERCIAL LEASE**



**201 Highway 268 N Wilkesboro**  
7,000 sf heated & cooled. 2, 500 sqft office space, 4,500 sqft of open landscape and on-site parking. **\$2,000 per month**

**COMMERCIAL LEASE**



**419 -A Main Street N Wilkesboro**  
Street level space is 20 X 40 commercial rental space with restroom & off street parking.  
**\$650 per month**

**COMMERCIAL LEASE**



**1516 -A Industrial Dr**  
4500 sqft warehouse space with garage door, 275 sqft office space & restroom.  
**\$2, 200 per month**

**MLS 951585 \$349,900**



**401 2nd St**  
Prime location for fast food, gas, retail, etc. Access to existing traffic signal.  
**COMMERCIAL PROPERTY**

**MLS 951779 \$399,000**



**3016 US Highway 21**  
Prime highway location for fast food, gas, retail, etc. Traffic count is 20,000 vehicles per day.  
**COMMERCIAL PROPERTY**

**MLS 1099322 \$109,900**



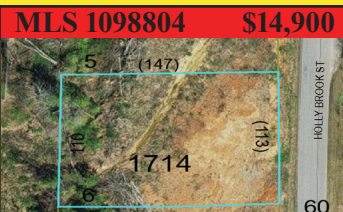
**Mountain Vista Dr, McGrady**  
21.09 acres of beautiful mountain land, some restrictions apply.  
**MOUNTAIN VIEWS**

**MLS 1099340 \$18,900**



**Mountain Vista Dr, McGrady**  
1.93 acres with beautiful long range mountain views. The perfect lot for your mountain home.  
**MOUNTAIN VIEWS**

**MLS 1098804 \$14,900**




**.39 ac Holly Brook Street**  
Great lot to build your own mountain retreat. Owner financing available.

**MLS 1098818 \$14,900**



**.39 ac Holly Brook Street**  
This is a nice lot in a good neighborhood to build your dream home on.

**MLS 1098603 \$19,900**



**1.25 ac Holly Brook Street**  
Nice partially wooded lot with end of the road privacy in Holly Hills subdivision.

**REDUCED**  
**4 LOTS AVAILABLE IN MOUNTAIN VIEW ESTATES**

Lot A .50 acres \$8,650  
Lot I .72 acres \$9,000  
Lot 13 .35 acres \$6,750  
Lot 16 .44 acres \$3,240